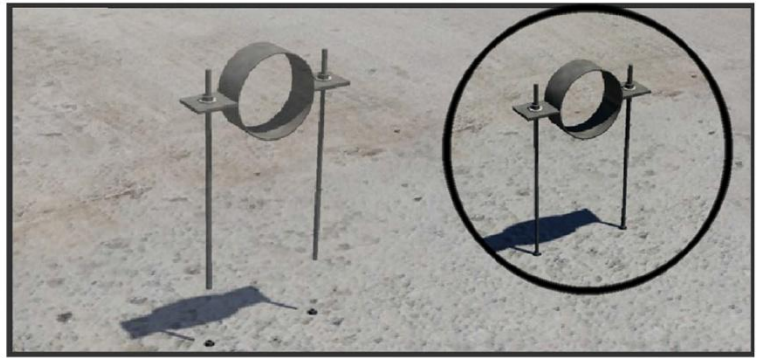
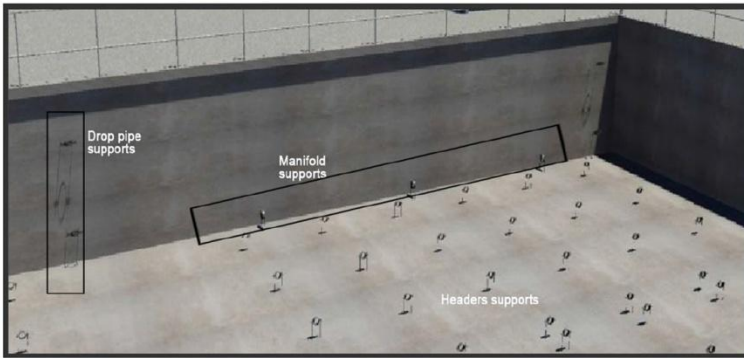




1. The concrete must be cured before any holes for the pipe supports are drilled.



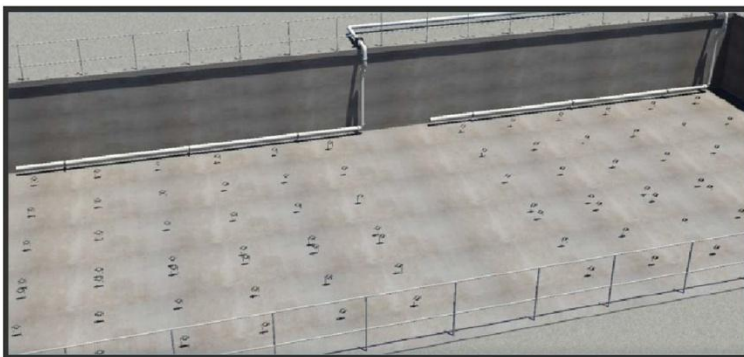
2. Holes drilled on to the concrete must be clean and dry before anchor bolts are installed.



3. Install all supports as per spacings show in SSI support installation drawings.



4. Install the drop pipe supports and connect the drop pipe to main supply header.



5. Take drop pipe as ref. to manifold support mounting locations. Connect the manifold pipe to the drop pipe.

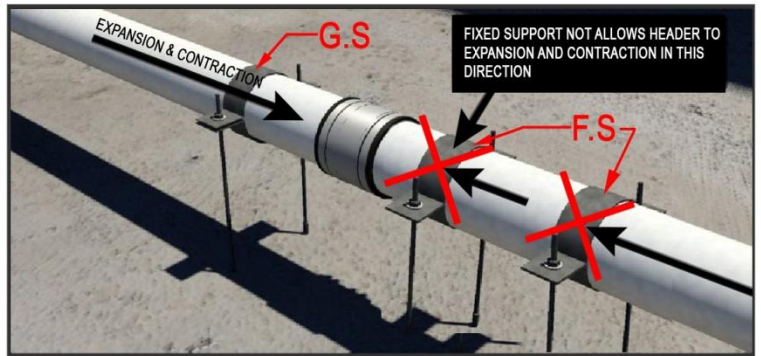


6. Take Manifold stub location as ref. and drill header support anchor bolts. Install headers on supports. First two supports stand after expansion joint is fixed.

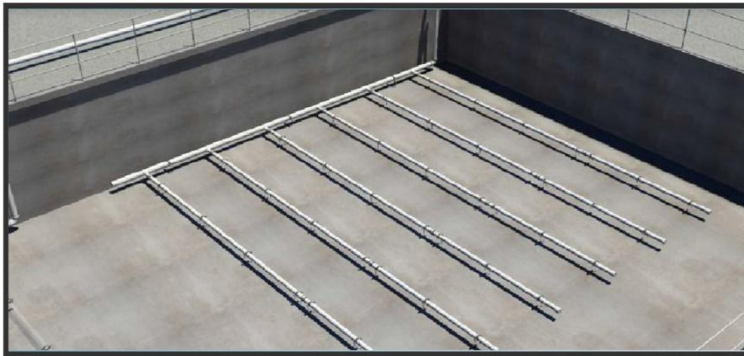
INSTALLATION PROCEDURE OF GENERAL PLANT ECD650 DISC DIFFUSERS WITH CLAMP SADDLE



7. Maximum length of headers is 5.8m/20ft in length and header sections are connected with expansion joints. After the first expansion joint the first 2 supports are fixed support stand, the remainder are



8. If in doubt please refer to the submittal for piping layout. The Guide supports allow for expansion and contraction of the piping during operation.



9. Repeat steps and complete installation of all header pipes according to SSI installation drawings.

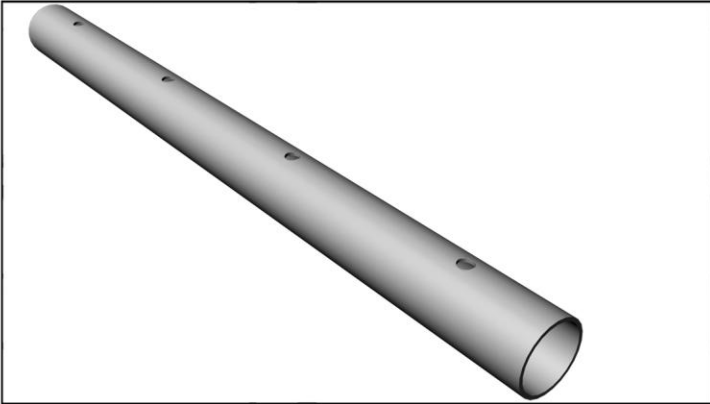
10. Install continuous purge system (As an option) at the end of the manifold/Continuous purge (SSI Coarse bubble Cap diffuser). Moisture purge system is shipped ready to use from the factory.



11. Complete installation of continuous purge (As an option).

12. Next step is to mount the ECD650 diffusers on the piping system.

INSTALLATION PROCEDURE OF GENERAL PLANT ECD650 DISC DIFFUSERS WITH CLAMP SADDLE



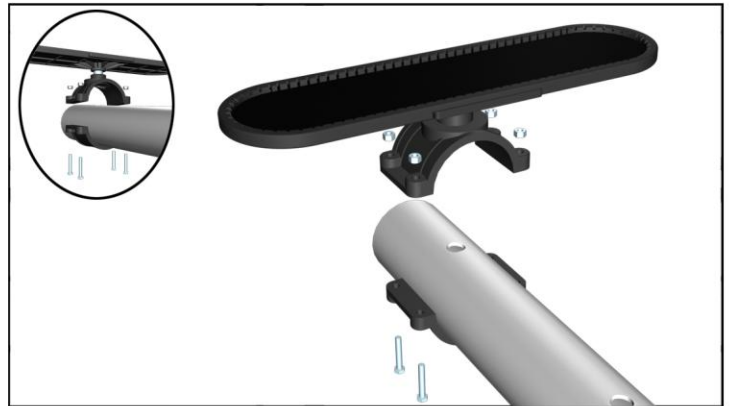
13. Make sure headers are drilled with 16mm holes.



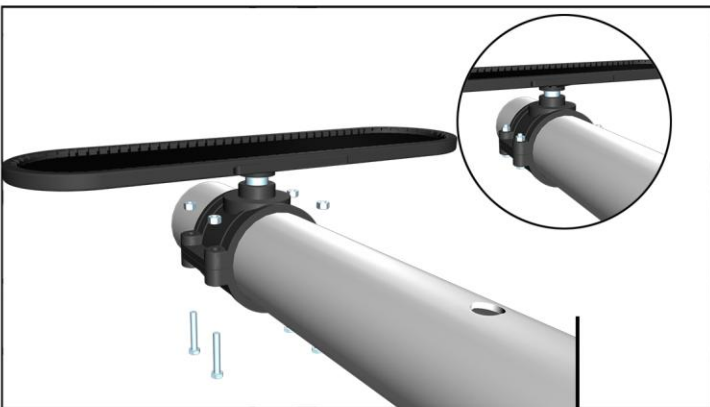
14. Install double nipple to the diffuser as shown.



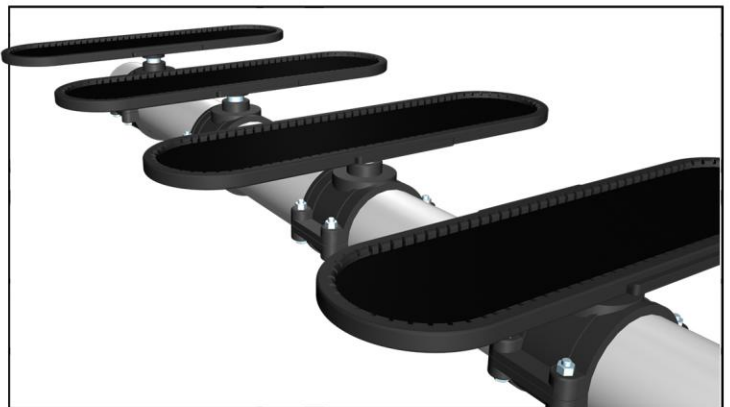
15. Next connect diffuser with upper saddle of clamp on saddle as shown.



16. Then place diffuser assembly on pipe and at that time place lower saddle to the pipe as shown. Make sure diffuser assembly properly placed on drilled hole.



17. Next install using bolts and nuts.



18. Same as install all diffusers. And next perform start up procedure to complete the plant installation.