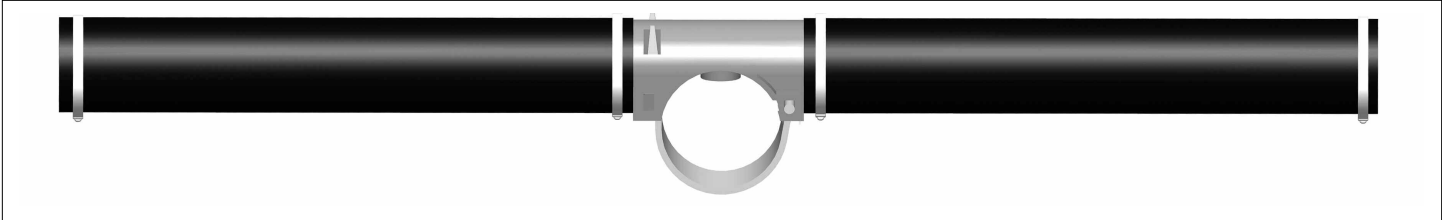


SSI™ SNAPPY SADDLE™ DIFFUSERS

AFTS31000 91mm Tube



- Highest possible quality and technology means years of trouble-free efficient operation.
- Highest possible SOTE independently tested per ASCE and lowest possible headloss.
- Compression molded EPDM membranes have very tight wall thickness tolerances, a long track record and exhibit even air distribution and minimal shrinkage over time.
- One-piece lightweight but strong ABS body makes handling during installation very easy.
- Single orifice on top center line of pipe means little chance for a single diffuser failure to contaminate all diffusers.
- Experienced Engineering and Drafting staff with years of practice to assist you.
- Integral register prevents cantilevered diffusers from axial rotation around the header pipe.
- 212° F (100° C) temperature resistance and environmentally-friendly ABS body.
- Individual thermocouples in each cavity of compression mold = 100% quality control.
- Low membrane plasticizer content to reduce shrinkage and hardening, but enough to avoid creep.
- Multiple integral check valves keep your aeration piping system clean.
- In stock on 3 continents in 4 locations.

TUBE MEMBRANES

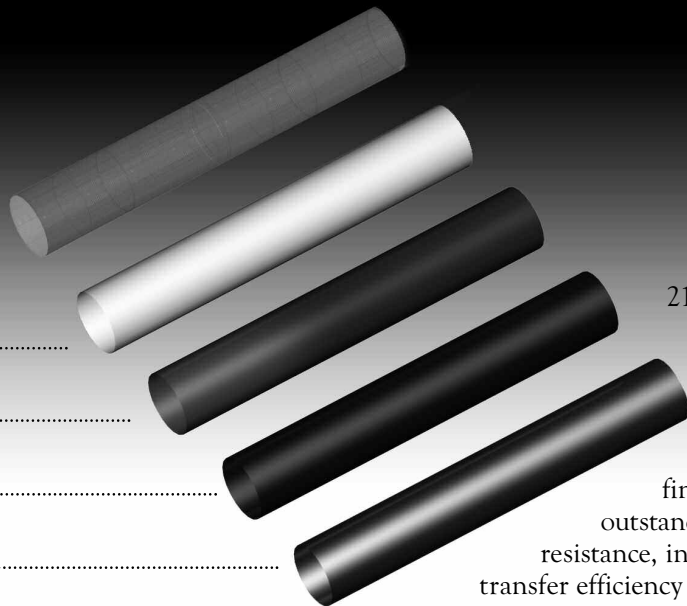
WEBBED URETHANE

PTFE DISPERSION

EPDM

ANTI-STATIC EPDM

fEPDM



21st century special materials such as PTFE-coated surface layers, fEPDM, anti-static EPDM, webbed urethane, as well as reinforced and coated ultra fine bubble membranes, offer outstanding chemical and fouling resistance, in addition to the highest oxygen transfer efficiency at a headloss you can live with.

Please see reverse for additional technical data



STAMFORD SCIENTIFIC
INTERNATIONAL
INCORPORATED

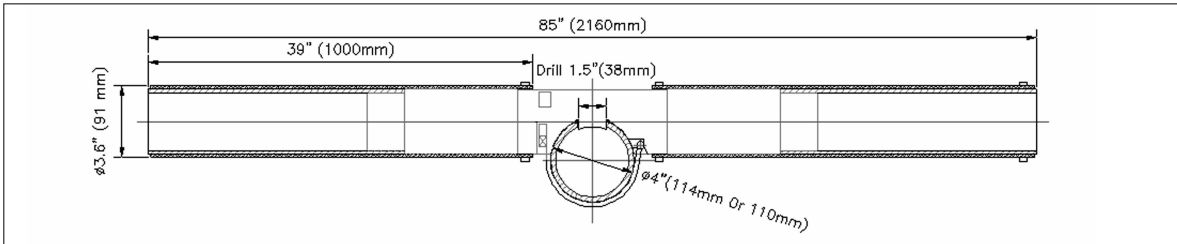
+1-845-454-8171 TEL
+1-845-454-8094 FAX

4 TUCKER DRIVE
POUGHKEEPSIE, NEW YORK 12603 USA
www.StamfordScientific.com
EMAIL: INFO@STAMFORDSCIENTIFIC.COM

SSI™ SNAPPY SADDLE™ DIFFUSERS

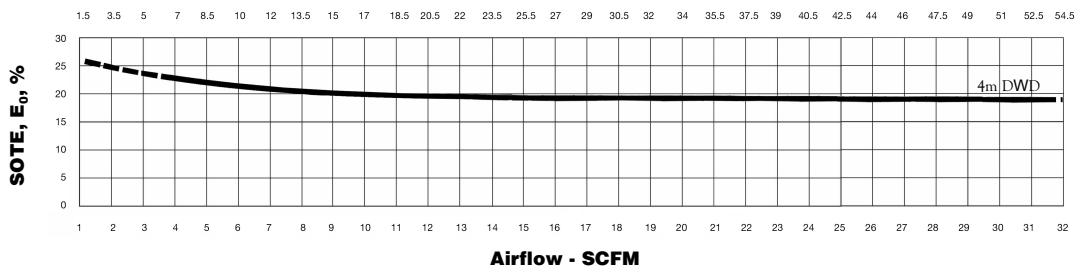
continued

AFTS31000 91mm Tube



PER SET [2x1000mm Length diffusers]

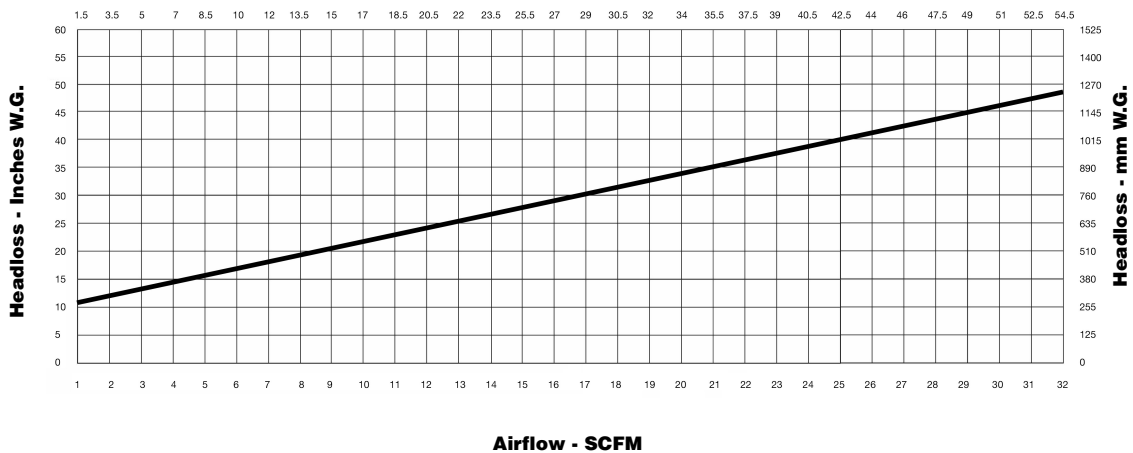
Airflow Sm³/hr



Note: SOTE varies with system design and test conditions.

PER SET [2x1000mm Length diffusers]

Airflow Sm³/hr



DESIGN FLOW PER SET	FLOW RANGE PER SET	ACTIVE SURFACE AREA	WEIGHT
2.0 – 26.0 SCFM (3.4 – 44.0 Sm ³ /hr)	0 – 32.0 SCFM (0 – 54.0 Sm ³ /hr)	4.75 ft ² (0.44 m ²) /set	10.0 lbs (4.5 Kg) /set



STAMFORD SCIENTIFIC
INTERNATIONAL
INCORPORATED

+1-845-454-8171 TEL
+1-845-454-8094 FAX

4 TUCKER DRIVE
POUGHKEEPSIE, NEW YORK 12603 USA
www.StamfordScientific.com
EMAIL: INFO@STAMFORDSCIENTIFIC.COM